

# HIGHFLOW 260<sup>0</sup>™ HEADBAIL



## HIGHFLOW 260<sup>0</sup>™ HEADBAIL

### The serious headbail for serious stockmen

Conventional headbails have a limited head/personal access (180 -210 degrees at best) which inhibits the ability for the operator to do jobs on the head, for example EID tagging where good access is required.

The Highflow260™ has 260 plus degrees animal head access

Animal flow and willingness to move into a headbail is all to do with the animal feeling safe and comfortable, the more directional flow "working with the animals directional movement" means better flow and better draw.

The HighFlow260™ has directional flow which moves with animal flow

To catch the animal, particularly flighty animals a fast reaction time between open and shut is required, the yokes V slide movement provide for this.

The HighFlow260™ - uniquely designed "wedged" V doors fast slide movement provide for fast animal catchment. The doors move with the direction of animal movement

The HighFlow260™ - Better Head/neck position catchment (not catching animals on shoulders)

Operators can see what is happening to the animal in order to catch it.

Head position is critical for the ability to work on the animals head, but also to encourage the animal to stand up. An animal with its head up very seldom falls to its knees.

The HighFlow260™ has a pointed V door design like an arrow which gives more accurate catching ability for the operator and a more natural force on the neck.

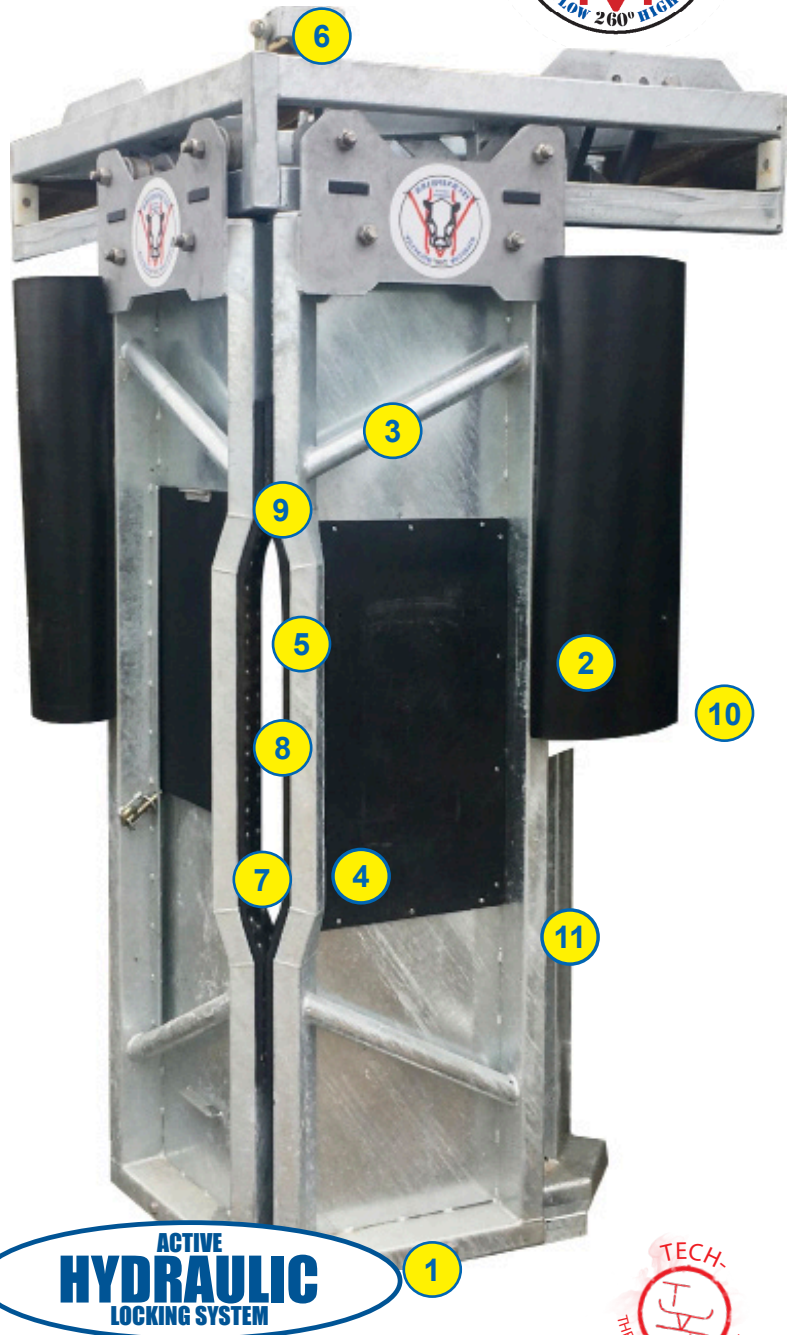
Yoke force on the neck determines holding ability. The "looser the grip" the more the animal moves.. (force beyond 200KG can kill the animal). In many headbails mechanical delivery of force is through the top of the structure, this means energy is lost in the centre of the yoke where we actually need the force.

The HighFlow260™ - Headbail Centrelock™ mechanism loads the two opposing doors in the centre of the doors (not top) delivering maximum pressure the animal's neck so force impact is focused in the center where the neck needs it.

The HighFlow260™ - Headbail is fully sheeted and the yokes run on a solidtrack providing for a solid hold both top and bottom with all locking energy delivered to the centre where closest to the neck.

Legs often get in the way by the animal moving forward, and poke legs through any gaps which may exist. This allows the animal to move more than what is desirable.

Safety in handling stock is paramount, the The HighFlow260™ - Headbail provides for all the features needed to have a fast, solid, heavy duty robust operating system which is animal wellbeing and people friendly and as such provides additional safety in use.



ACTIVE  
**HYDRAULIC**  
LOCKING SYSTEM



"Down south Liz and John Mc Kerchar, of Cave also have a Hiflow 260 Cattle Handler which was installed in 2019 for their early gestation Hereford stud Shrimptons Hill. Now having done a lot of work in this unit this is what they have to say " "we never thought that Cattle handling could be so easy, it's made a massive difference to how we do things, we also have 2 other Technipharma manual Handlers, also great to work with, but the Highflow is just the bees-knees" safety, speed and the fact animals are very relaxed being handled are big plusses for us. "



Freephone NZ 0800 80 90 98 E: [sales@technipharma.co.nz](mailto:sales@technipharma.co.nz) W: [www.technipharma.co.nz](http://www.technipharma.co.nz)  
Freephone AU 1- 800 124 034 E: [sales@technipharma.com.au](mailto:sales@technipharma.com.au) W: [www.technipharma.com.au](http://www.technipharma.com.au)

HIGHFLOW 260™

**Farm-Ready™**  
 CATTLE HANDLERS - HEADBAILS

**FINANCE  
AVAILABLE**


# CATTLE HANDLER HIGHFLOW 260<sup>0</sup>™ HD EXTREME™

QUALITY AND INNOVATIVE DESIGN BY THE #1 LEADER IN CATTLE HANDLING SYSTEMS

**NEW**

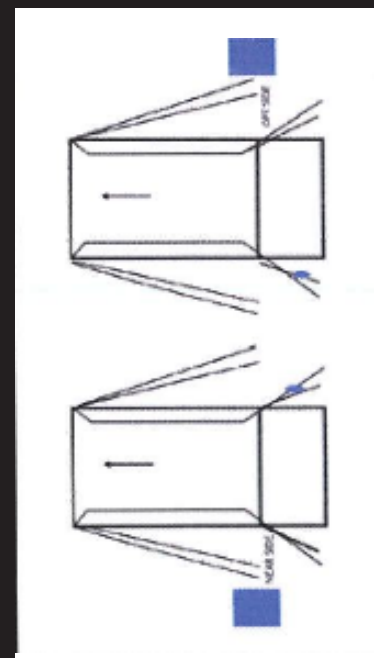
## iBeef® farm with HIGHFLOW 260<sup>0</sup>™ HD EXTREME™

The Highflow 260<sup>0</sup> HD Extreme Handler is designed for Cattle Farmers who deal with heavy or large volumes of Cattle like heavy Bulls or Large Breeding herds.

Large and heavy animals can behave unpredictably and their weight is often 10 times the weight of the operator. This makes secure holding and easy access to the animal of paramount importance for the safety

of the operator. The design of this handler enables suburb access to head and neck for EID tagging and other general cattle work.

The Highflow 260<sup>0</sup> Extreme Handler is a stake in the ground for proper and safe cattle handling for large volumes and large animals.



### HIGHFLOW 260<sup>0</sup> HD EXTREME FEATURES

- Hi-Flow 260 HB fully hydraulic Headbail
- Active Hydraulic Headbail operation
- Hot Dip Galvanised
- 100x100x4 Main Frame
- Double HB injecta gates
- Pipe style gates (no sagging)
- All gates 40NB Heavy wall pipe 4mm
- Steel Gate panels welded 3mm
- Bottom gate mid gate and top gate "3 up"
- 65NB backstructure post at vet section
- Split slide gate 50NB & 3mm panel Hydraulic operation
- Slide gate pick up points M16 and rod end links
- Slide gate bottom runner nylon runners
- Slide gate rubber stoppers both ways
- 50x50 SHS floor runners
- Swing arm for scale & draft controls
- Strikers/pin and gate rubber stopped
- 4 Vet section split gates pinned with 2 rails top gate
- Drop gate gates in main top gate standard operation-side (non operation side op.)
- 2 sided parallel squeeze Hydraulic operation
- Gate work tray
- Rubber over steel galv floor standard
- HD 24mm Camlatch (black rubber/plastic grips)
- S/S Bolts / nuts

**"we make farming ezy"**



Freephone NZ 0800 80 90 98 E: [sales@technipharma.co.nz](mailto:sales@technipharma.co.nz) W: [www.technipharma.co.nz](http://www.technipharma.co.nz)  
 Freephone AU 1- 800 124 034 E: [sales@technipharma.com.au](mailto:sales@technipharma.com.au) W: [www.technipharma.com.au](http://www.technipharma.com.au)



# HIGHFLOW 260<sup>0</sup>™ HEADBAL



## HYDRAULIC OPERATION

Safe working for all staff.  
Power at your fingertips.



## EASY TO INSTALL

Bolt on to your existing handler or strainer post.

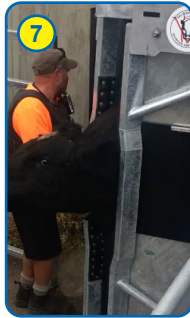


UNIQUELY DESIGNED "WEDGED" DOORS FAST SLIDE MOVEMENT PROVIDE FOR FAST ANIMAL CATCHMENT



## EID

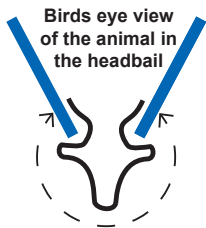
Monitor And Eid Reader for 100% read



260° PLUS DEGREES ANIMAL HEAD ACCESS - GREAT FOR EID TAGGING

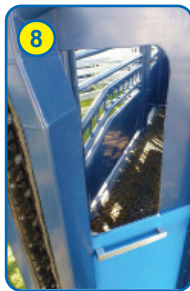


DESIGNED FOR THE DISCERNING COMMERCIAL AND STOCK FARMER



## GREAT 260° WORK ZONE

Wherever you stand there is access.



INJECTAGATE™ - 2 SLIDING PANELS AT THE FRONT FOR OPTIMUM NECK ACCESS OPTIONAL EID READER PANEL

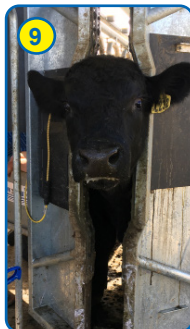


500KG OF PURE GRUNT AND TECHNOLOGY. THE BEST. EZY!



## EXCELLENT DRAW

Means faster working. Saving time. Animals feel comfortable.



EXCELLENT HEAD/NECK POSITION CATCHMENT (NOT CATCHING ANIMALS ON SHOULDERS)

A perfect fit.



## SUPERLOCK VIA HYDRAULIC CENTRELOCK™ SYSTEM

Power where you need it.

**NO BULL HOLD**  
**AND OUR MONEY BACK GUARANTEE**  
**100% EZY!\***



\*Standard sales conditions apply. See Pricelist for details.



**EZY QUOTE:** "The demonstration at Mystery Creek Fieldays confirmed my thoughts on the TechniPharm Cattle Handler". "It was the one I could see working very well in my cattle yards". "At 4.55 pm I strolled up to the TechniPharm site & put a deposit on one, paying the balance on delivery in October". "It's now December & many bulls between 300 and 800 kilo's have passed through them". "I'm over the moon with its performance!" "Even my vet who was out the other day to administer antibiotics to a difficult bull that had been injured though I'd made a very good choice" Calum McMillan, Hastings.



Freephone NZ 0800 80 90 98 E: [sales@technipharm.co.nz](mailto:sales@technipharm.co.nz) W: [www.technipharm.co.nz](http://www.technipharm.co.nz)  
Freephone AU 1- 800 124 034 E: [sales@technipharm.com.au](mailto:sales@technipharm.com.au) W: [www.technipharm.com.au](http://www.technipharm.com.au)