

+ BULL- BEEF- BOX™ PRIME



"I was looking for something solid and simple, no need for bells and whistles.

For weighing and drafting, this unit does it simply and effectively.

So easy to use, my neighbour tried it out and said he preferred it to his present unit with just the one go.

It does exactly what I was wanting, I don't use the headbail too often, but it's good to know it's there when I need it."

John Reeves – Te Kuiti

BULL-BEEF-BOX™ BASE FEATURES

- Full size concertina headbail (NS or OS operation) with adjustable pressure holding
- Hydralock® silent locking system
- Rear operation
- Full size single access side gates non bruising K rail
- Double latched gates
- Run up bar system
- Anti body sway- bar for unrestricted side access
- Full size paneled slide gate with lock
- HD anti jump bar (full length)
- HD 75x75 mm main frame
- Steel serated non skid floor

Bull-Beef™ is just that little different when it comes to handling. Often fully equipped handlers or crushes as some call them, are "over specified with vet sections and multiple gate entry points which are great when you dealing with Cows and young stock, but when it comes to Bull Beef they can be done without. The Bull-Beef-Box is just made for BULL BEEF , every thing you really need is there and what you can do without is not, That EZY

- Pour-on drench access opening
- Super heavy duty engineering
- Hot Dipped galvanised
- Built in scale monitor shelf
- Built in one side drafting with remote handle and positive stop

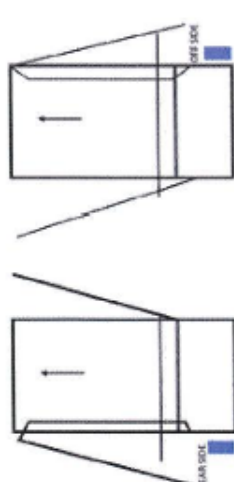
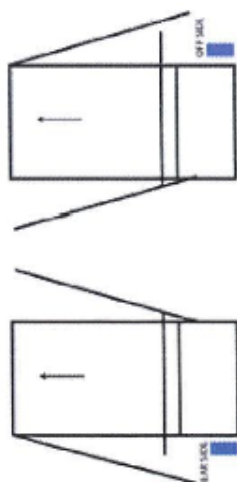
+ BULL-BEEF-BOX™ PRIME FEATURES

- Rotating Yoke headbail technology (NS or OS operation)
- Injector gate
- Parallel side squeeze (with silent Kwicklock® ram)
- Double acting paneled slide gate with lock
- Active Hydraulic operation of Headbail



BULL-BEEF-BOX™

BULL-BEEF-BOX™ PRIME



Work Safe
TASMANIA

A priceless alternative to any competitor product, yet with the TechniPharm brand you can be assured of excellent retention value and nation wide company support

EZY QUOTE: "What I like most about the handler is that it is an integrated unit -my animals are calmer because of the quiet headbail and a quiet rubber floor" Ian Wickham -NZ Grazing Company



Freephone NZ 0800 80 90 98 E: sales@technipharm.co.nz W: www.technipharm.co.nz
Freephone AU 1- 800 124 034 E: sales@technipharm.com.au W: www.technipharm.com.au

BULL- BEEF- BOX™ PRIME



BULL-BEEF-BOX
Ready for action



**RUN UP BACKING
BAR SYSTEM** solid
lock up front side and
back. Do what ever
needs doing safely



**PARALLEL SIDE
SQUEEZE**, stress free
handling calm the animal
down



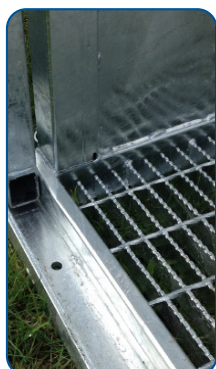
**FULL CONCERTINA
HEADBAIL WITH
RUBBER YOKE AND
NECK EXTENDERS**
super adjustable
pressure holding



**DOUBLE LATCHED
SIDE GATES FOR
EXTRA SAFETY**



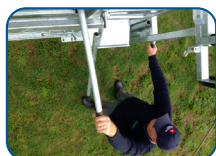
**AUTO LOCK ON REAR
GATE** safety for the
operator is paramount



**SOLID REAR DOOR
TRACK** dirt is no issue
here



HEAVY JUMP RAIL
keep that animal
contained



**ERGONOMIC
OPERATION** fast ezy



**EASY GRIP POSITIVE
HANDLES** maximise
controls



**HEAVY SCALES
MOUNTING FEET**
fits all models "plug
and play"



**NON OPERATING SIDE
DRAFTING** Great Ezy
Action
PRIME



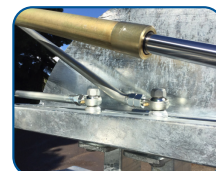
**SOLID DUAL
LATCHED GATE** NON
OPERATING SIDE
secure lock at all times



**SOLID NON SLIP
FLOOR** Dirt is no
obstruction for this
door ** RUBBER MAT
UPGRADE- PRIME



**3 POSITIONS FOR
ANTI SWAY BARS**
Hold + Full Access at
all times



**HYDRALOCK(r)
LOCKING AND ROSE
JOINTS** Silent and
stress free



TOOL/ MONITOR TRAY
so handy, plug and
play....



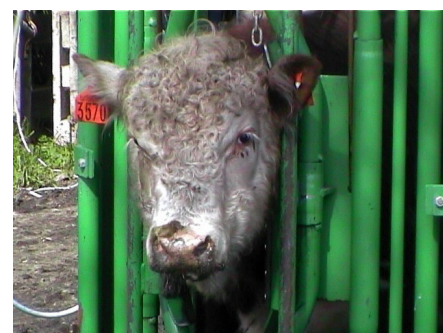
**HEAVY DUTY
LATCHES ON
ALL GATES**



**REAR OPERATION
CONCERTINA WITH
UP AND DOWN
HANDLE**



**ROTATING YOKE WITH
ACTIVE HYDRAULIC
OPERATION** SUPER
EZY ON YOUR
SHOULDERS
PRIME



EZY QUOTE:

"Bull-Beef-Box™ a Cattle Handler specially designed for Bull-Beef. Raymond Lempier (Raglan on the Necklamp headbail " this unit is just superb in handling larger bulls its just a great unit"

